

Central Coast Ag Waiver

Rising Nitrate Levels in Monterey County

Monica Gurmilan
EJCW Central Coast Outreach Specialist
March 7th, 2017, Watsonville, CA, Watsonville City Council Chambers



The Environmental Justice Coalition for Water
Water Justice for All

Outline

- Rising Nitrate levels in Disadvantaged Communities.
- Responsibility to protect drinking water sources.



Nitrate in Disadvantaged Communities

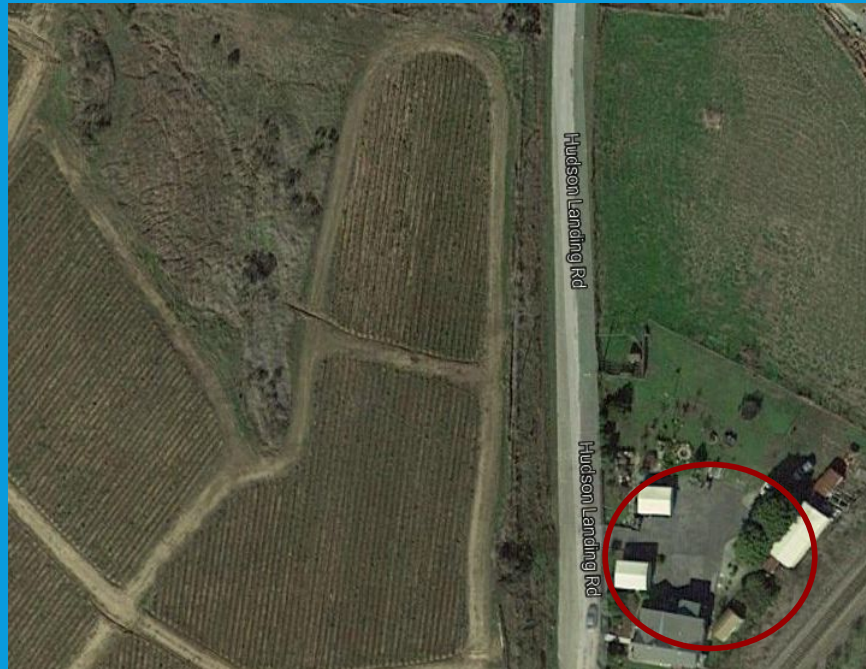
All State or Local Small Water Systems

Community Name	Nitrate as N (mg/L) MCL=10 (mg/L)
Hudson Landing Rd.	40
Middlefield Rd.	13
Schoch Rd.	14
Walnut Ave.	36

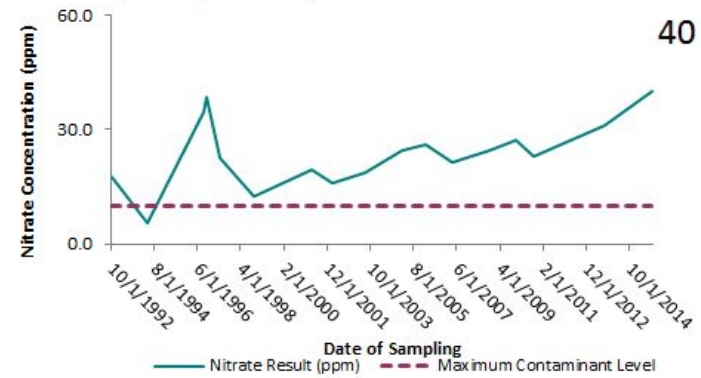
*Data provided by County of Monterey Health Department:
Environmental Health, 2016.



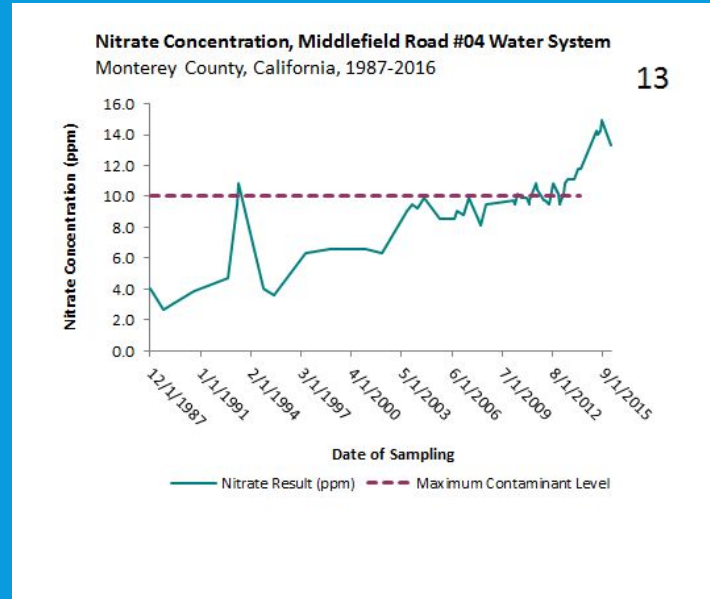
Hudson Landing Rd.



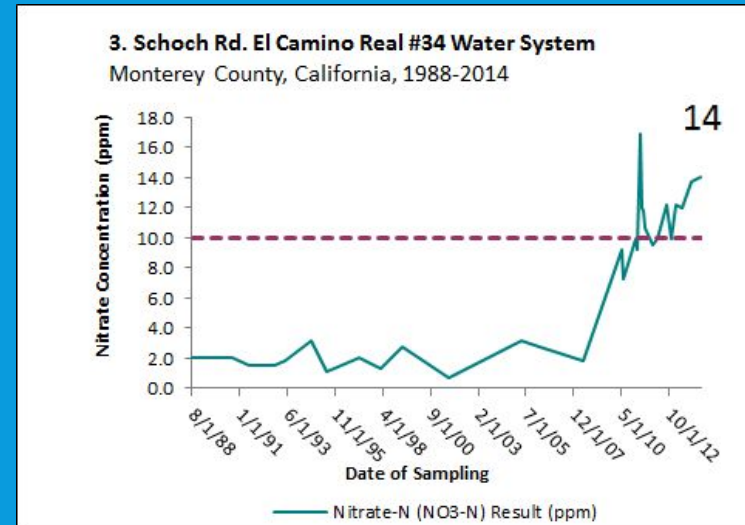
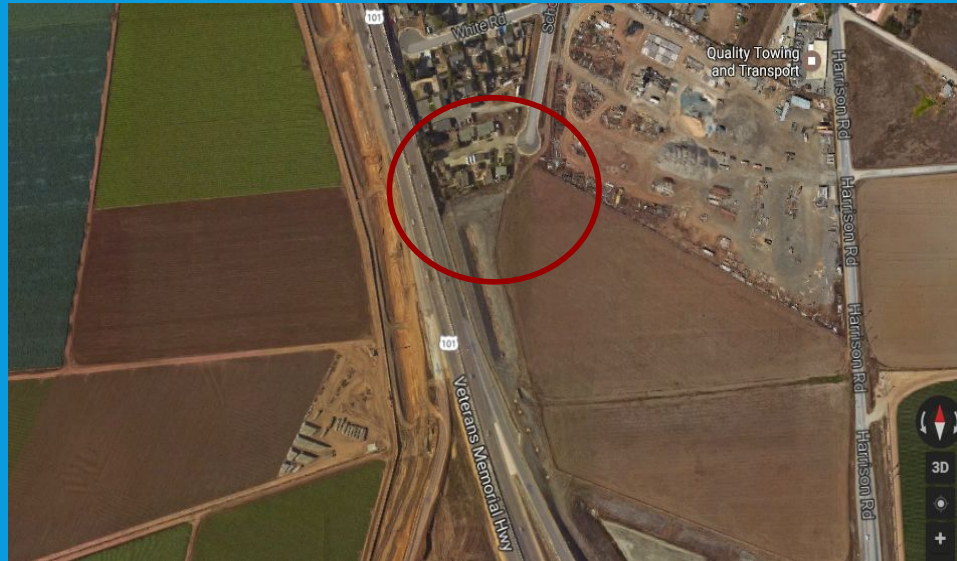
Nitrate Concentration, Hudson Landing #03 Water System
Monterey County, California, 1992-2015



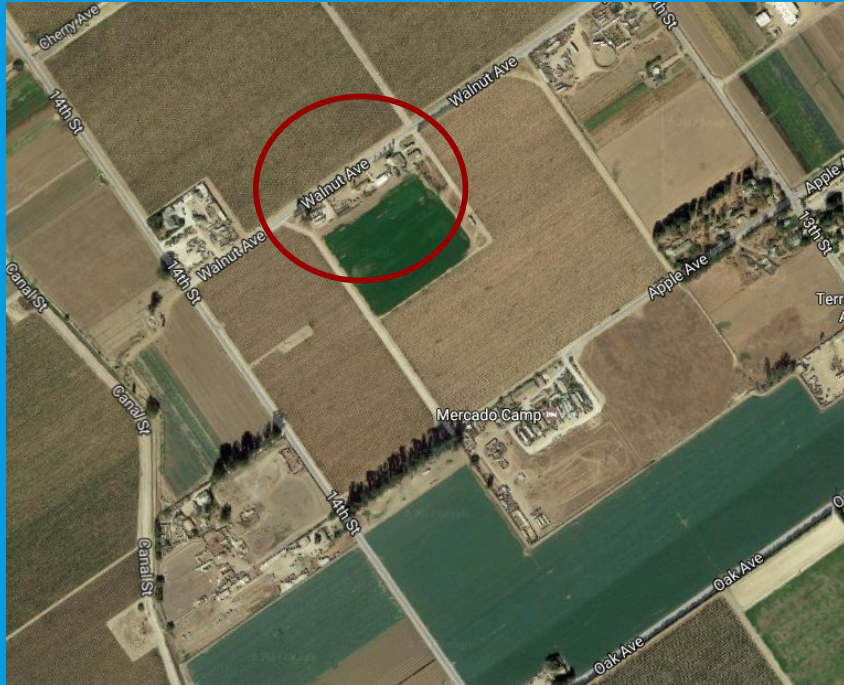
Middlefield Rd.



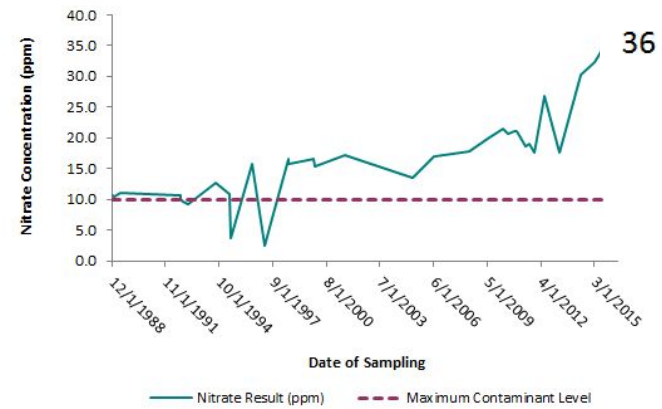
Schoch Rd.



Walnut Ave.



Nitrate Concentration, Walnut Ave #02 Water System
Monterey County, California, 1988-2016



Note: Maximum Contaminant Level (MCL): Defined as the highest level of a contaminant that is allowed in drinking water. Accessed from <http://water.epa.gov/action/advisories/drinking/upload/dvstandards2012.pdf>, Environmental Protection Agency (EPA), 2009
Source: Monterey County Health Department, Environmental Health Bureau, 2014.



Responsibility to Protect Drinking Water Sources

Stronger actions to ensure safe drinking water

- More frequent testing
- Immediate notice to local residents (for violations)
- Discharger funded replacement water
- Monitoring and assessment should lead to action

Human Right to Water

- Health
- Affordability

RESOLUTION NO. R3-2017-0004

"...(The Central Coast Water Board) Will promote policies that advance the human right to water and discourage actions that delay or impede opportunities for communities to secure safe, clean, affordable, and accessible water adequate for human consumption, cooking, and sanitary purposes."

