

Central Coast Groundwater Coalition

2013 Progress Report

Central Coast Regional Water Quality
Control Board

December 5, 2013



History of CCGC



➤ **March – December 2012**

- Agriculture Task Force raised funds, hired consultants to develop groundwater plan

➤ **January – July 2013**

- Developed plan; approved July 11, 2013 by Regional Water Board

➤ **August – September 2013**

- Formed board of directors, adopted bylaws: August 4, 2013
- Added membership in northern counties (135,000 acres)

➤ **October – November 2013**

- Added membership in San Luis Obispo, Santa Barbara counties (65,000 acres)

➤ **October – December 4, 2013**

- Sampled 100+ plus domestic and agricultural wells

CCGC Organizational Structure

- **Organized as a public benefit corporation (501c5 approval pending)**
- **Mission: Fulfill groundwater requirements for members under Irrigated Lands Regulatory Program**
- **Management**
 - **Executive Director, Parry Klassen**
 - **Board of Directors ; consists of growers, agricultural representatives**
 - Seated on August 5, 2013
 - Adopted bylaws
 - Elected officers, executive committee
 - Hired administration organization
 - Grower-Shipper Association of Central California



CCGC Board of Directors

Tim Borel

The Nunes Company, (President)

Abby Taylor-Silva

Grower-Shipper Association of Central CA (Sec/Treasurer)

Pete Aiello

Uesugi Farms

Richard Bianchi

Sabor Farms

Marshall Braga

Braga Ranches

John Eiskamp

JE Farms

Mike King

Mission Ranches

Dennis Lebow

Reiter Berry

Andrew Parolini

McIntyre Vineyards/Monterey Pacific

Randy Sharer

Claire Wineman

Grower-Shipper Association of SLO and SB Counties



CCGC Membership Totals

Total Members	559
Parcels	3,325
Acreage	194,542

Counties

- Monterey, San Benito, Santa Clara, Santa Cruz, San Luis Obispo, Santa Barbara, Ventura

CCGC Membership Totals

Central Coast Groundwater Coalition Membership Data

November 15, 2013

	Memberships	Parcels	Acreage
Monterey	142	1,220	105,171
San Benito	43	222	7,762
Santa Clara	80	279	7,414
Santa Cruz	80	448	12,060
NORTH NET TOTALS	313	2,169	132,408
San Luis Obispo	119	364	15,003
Santa Barbara	146	776	46,595
Ventura	4	16	537
SOUTH NET TOTALS	246	1,156	62,135
GRAND TOTAL NET	559	3,325	194,542

CCGC Commitment



- Implement and take responsibility for tasks outlined in approved groundwater monitoring plan
- Conduct outreach to members
 - Developed website www.centralcoastgc.org
 - CCGC Update newsletter to members; periodic member meetings planned
- Coordinate with the Regional Water Board on adopted plan activities
 - Met with RB staff in October, November to provide updates on activities, work through new program glitches

North Counties Plan Components

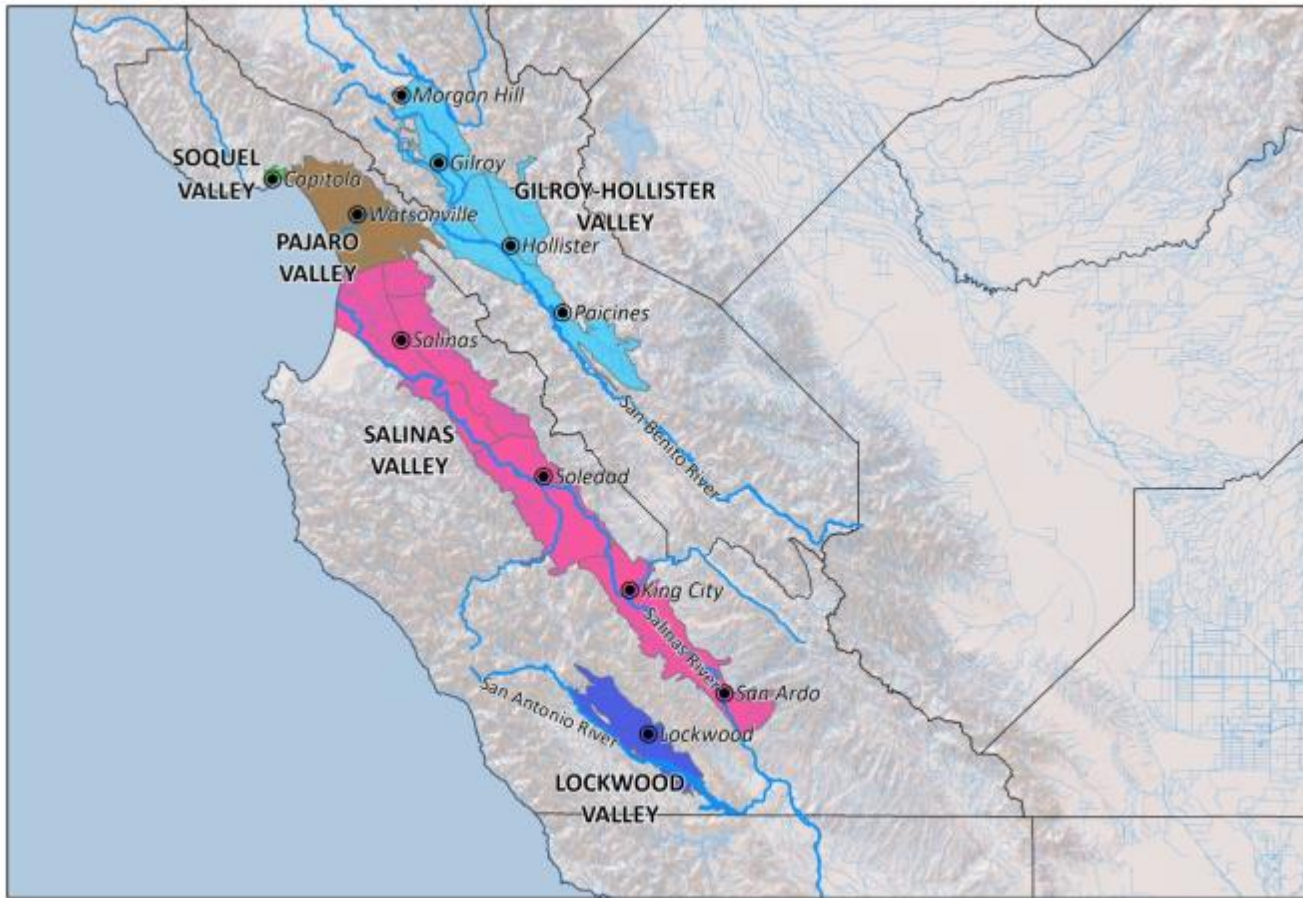
Northern Counties completed in three phases

- Locate & Sample Domestic Supply Wells On Member Owned/Leased Land

Phase	Location	Completion Date
Phase I	Salinas Valley & Lockwood Valley	March 31, 2014
Phase II	Pajaro Valley	June 30, 2014
Phase III	Gilroy-Hollister area	August 31, 2014

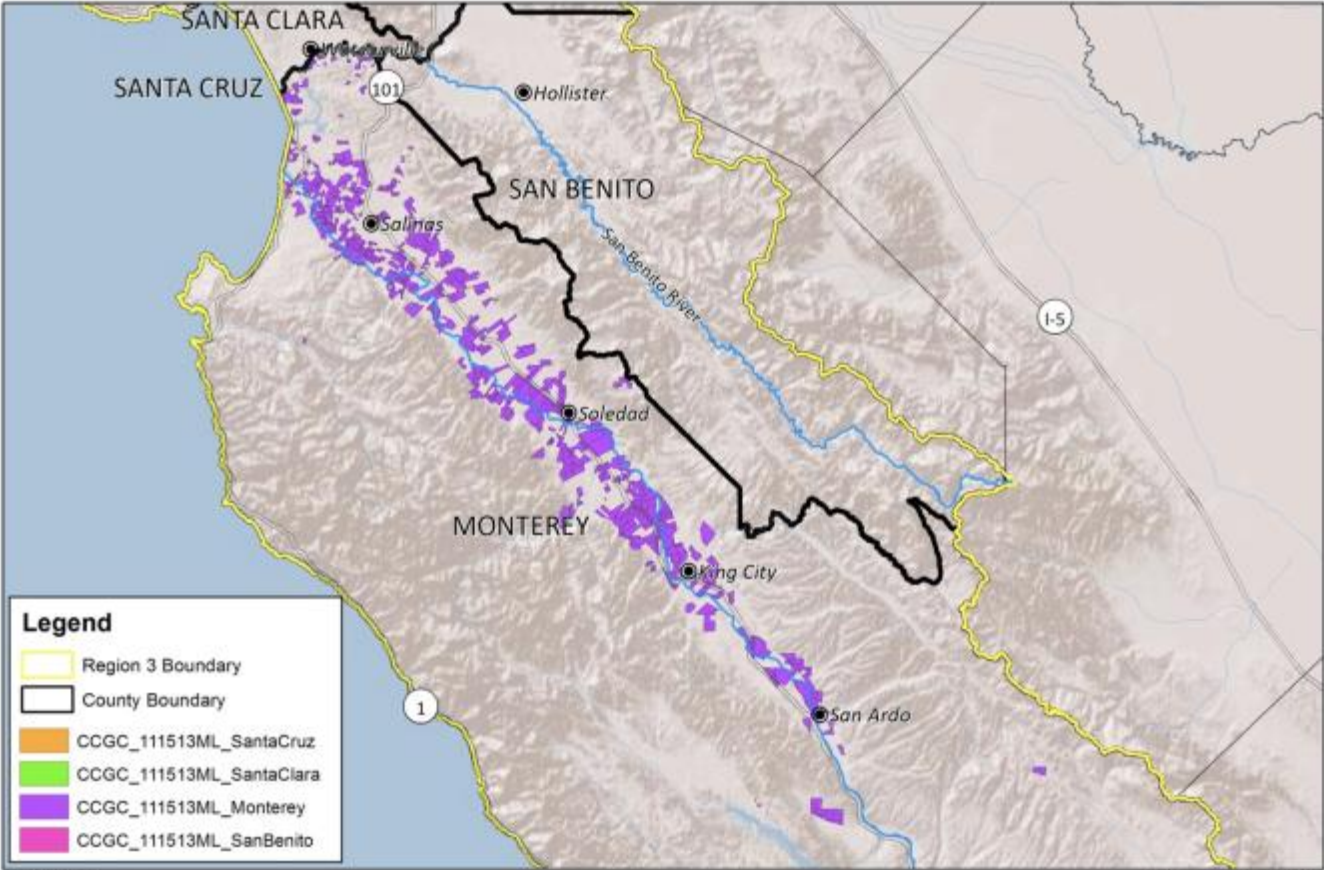


Northern Region



Central Coast Ground Water Basins

Salinas Valley Member Parcels



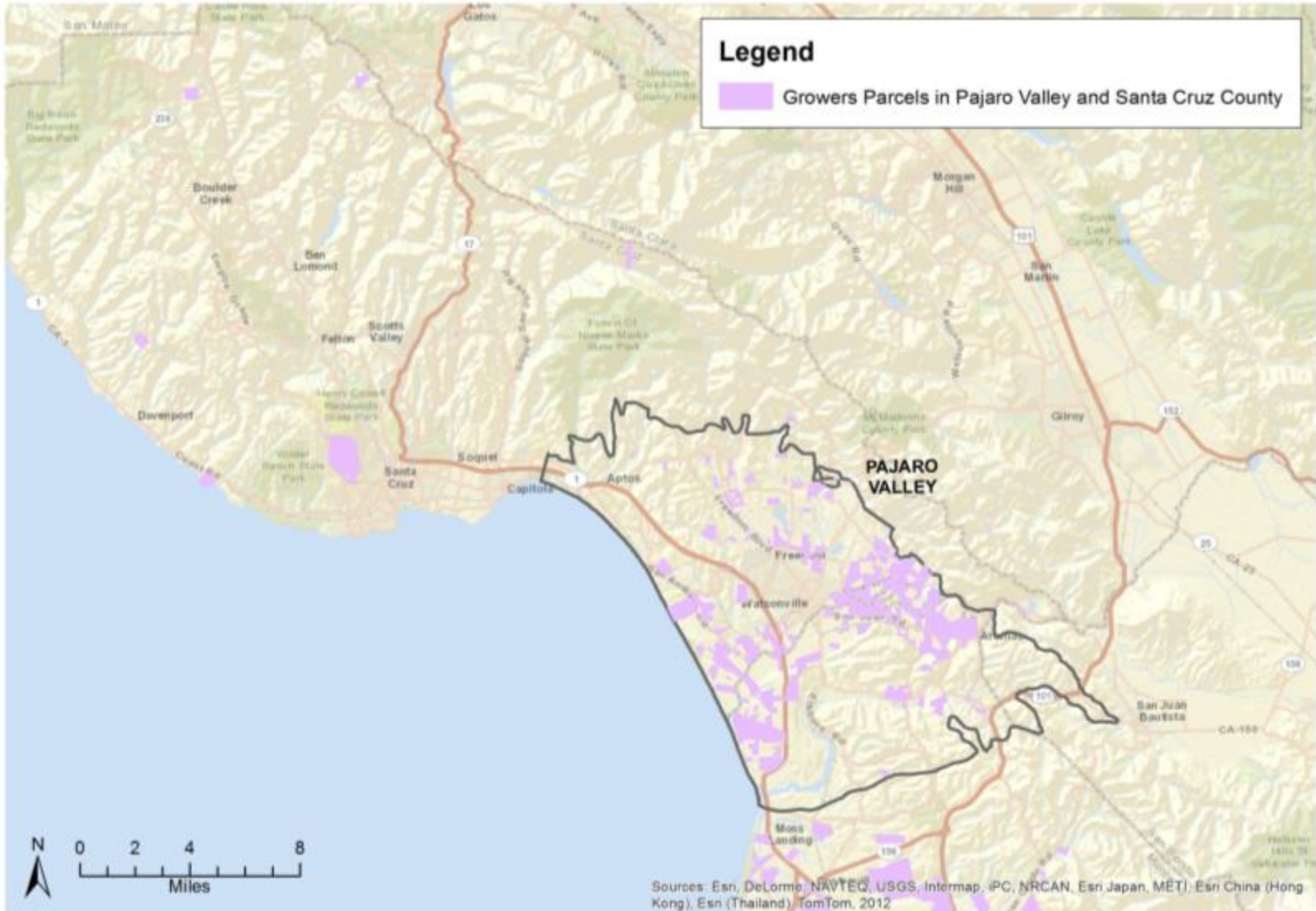
Source of Layers:
Hydrology - NHD hydrodata, 1:24,000 scale, <http://hhd.usgs.gov/>
Roads, highways, railroads, county boundary, city outlines - California Spatial Information Library
Lands Use - Farmland Mapping & Monitoring Program
Basemap, Shaded Relief - ESRI
Datum - NAD 1983

Date Prepared: 10/15/13

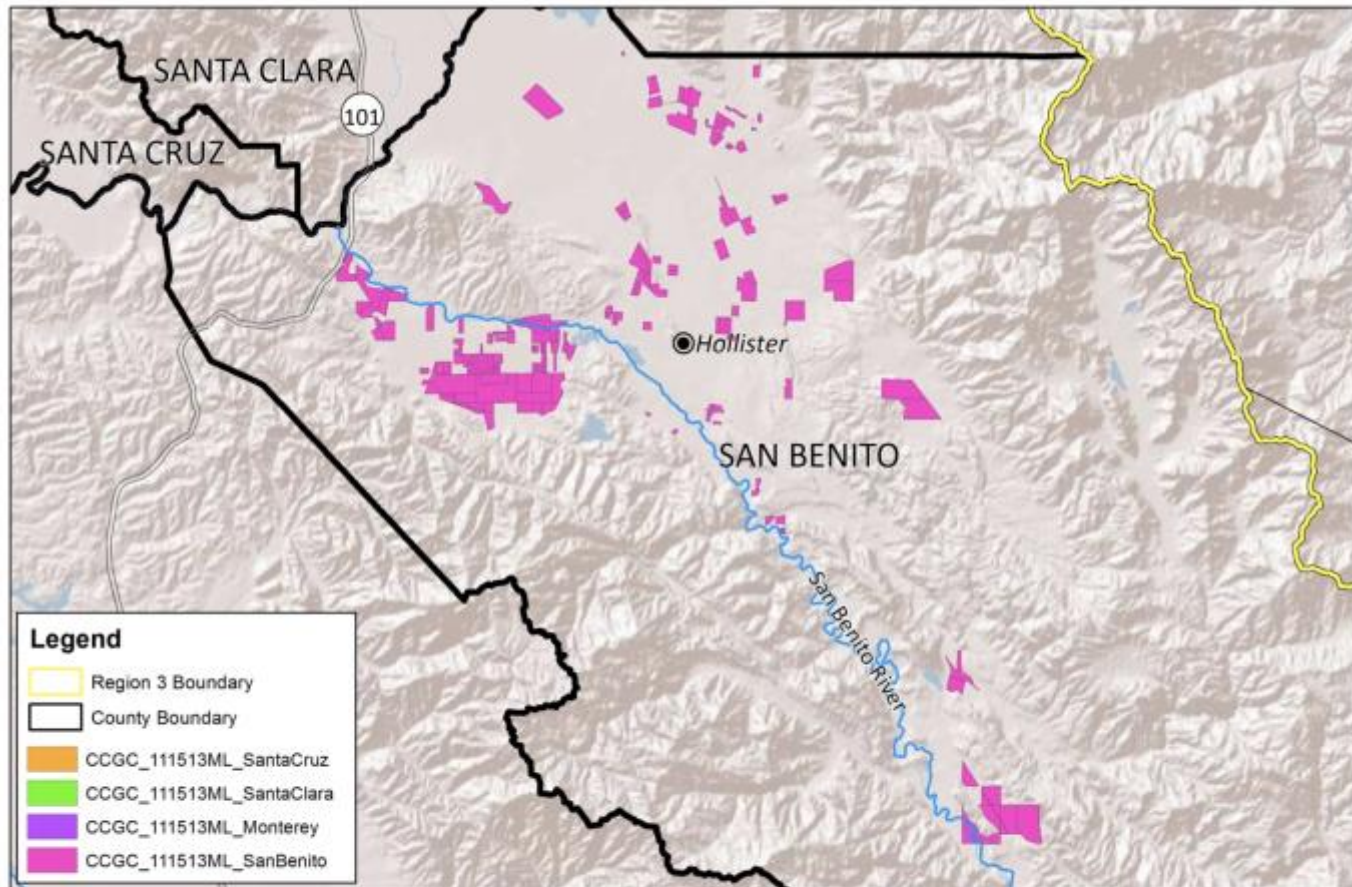


CCGC Member Location in Northern Central Coast Counties - Monterey

Santa Cruz County Member Parcels

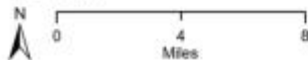


San Benito County Member Parcels



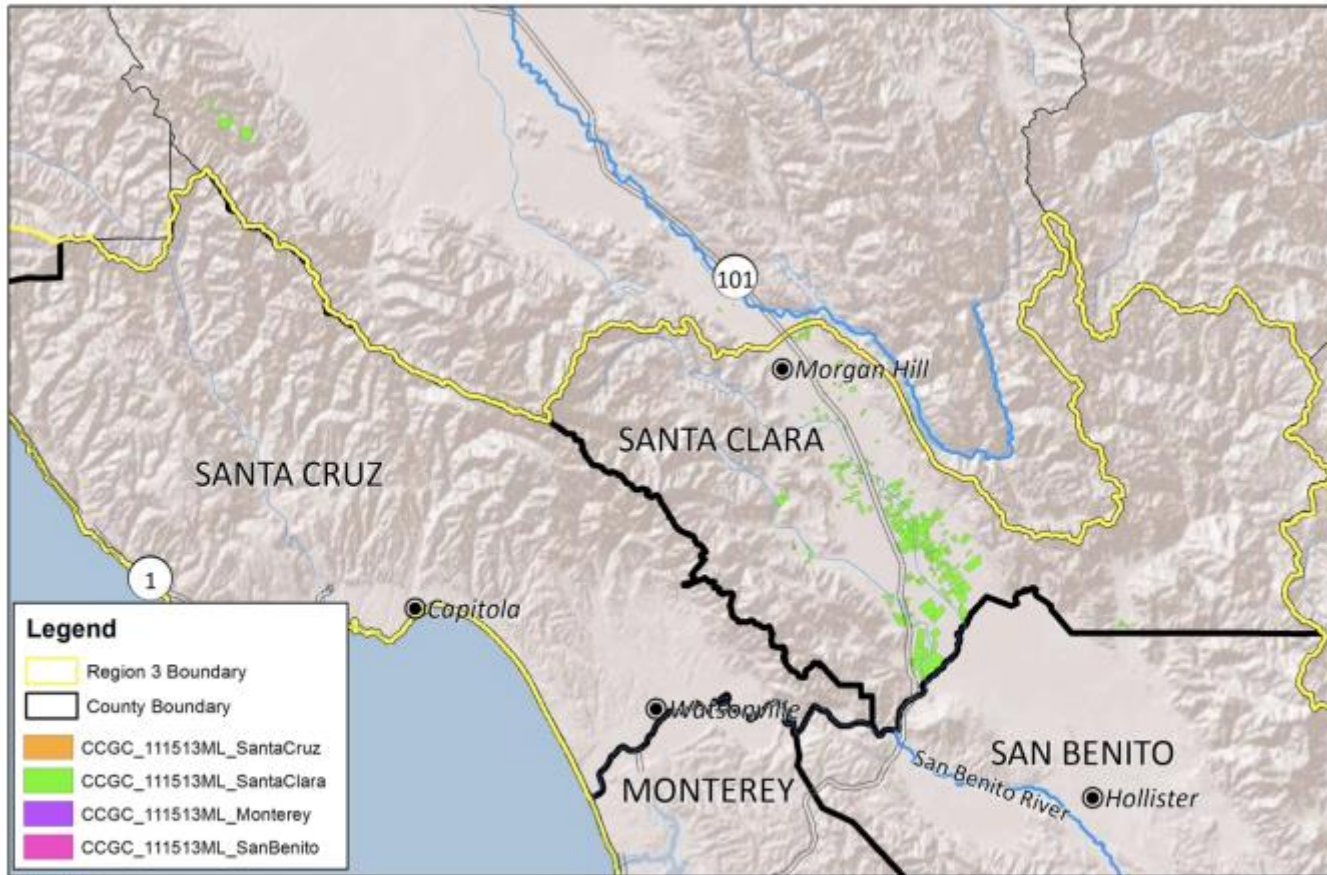
Source of Layers:
Hydrology - NHD hydrodata, 1:24,000-scale, <http://hnd.usgs.gov/>
Roads, highways, railroads, county boundary, city outlines - California Spatial Information Library
Land Use - Farmland Mapping & Monitoring Program
Basemap, Shaded Relief - ESRI
Datum - NAD 1983

Date Prepared: 10/15/13



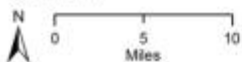
**CCGC Member Location in Northern
Central Coast Counties - San Benito**

Santa Clara County Member Parcels



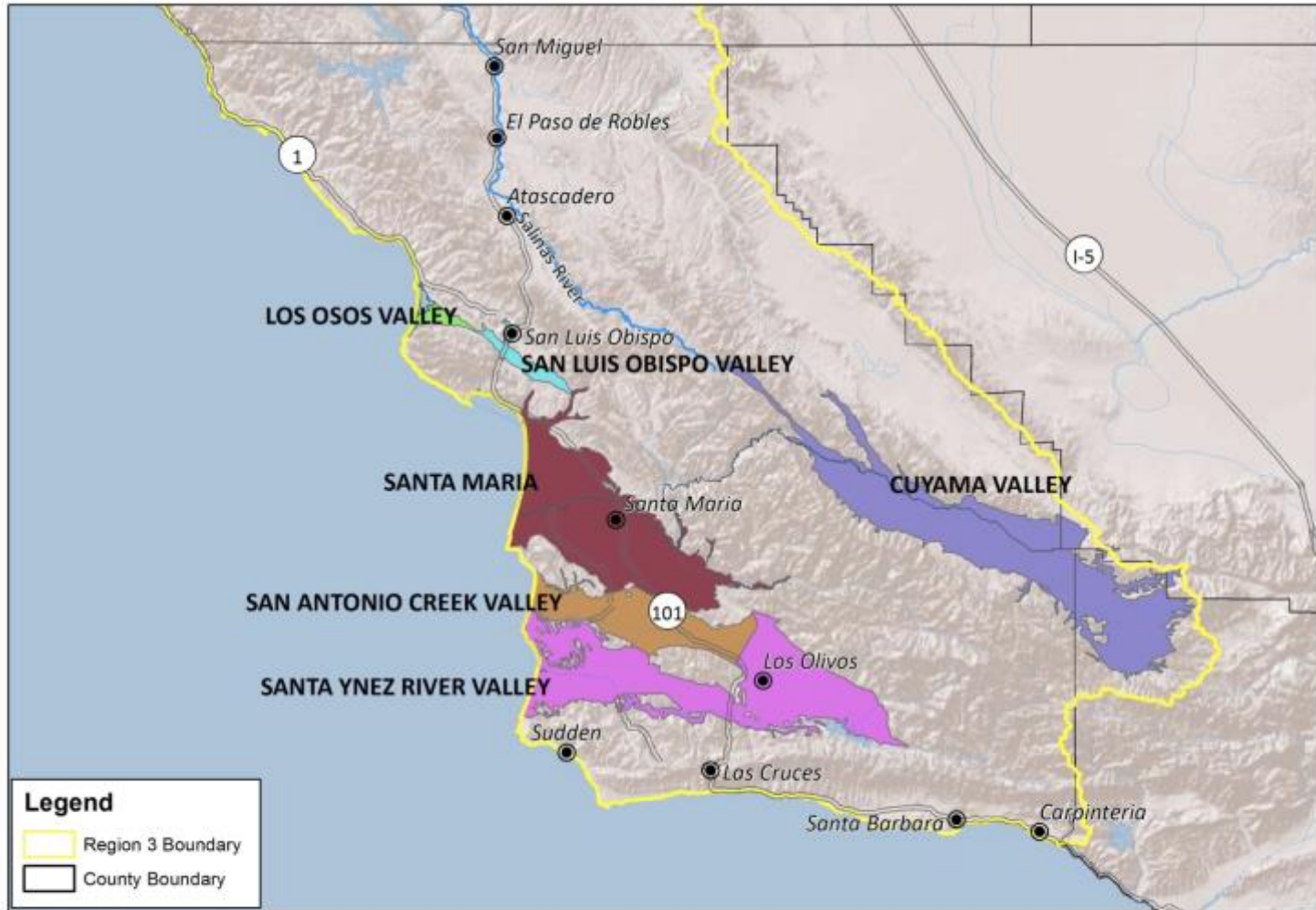
Source of Layers:
Hydrology - NHD hydrodata, 1:24,000-scale, <http://nhd.usgs.gov/>
Roads, highways, railroads, county boundary, city outlines - California Spatial Information Library
Land Use - Farmland Mapping & Monitoring Program
Basemap, Shaded Relief - ESRI
Datum - NAD 1983

Date Prepared: 10/15/13

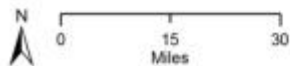


**CCGC Member Location in Northern
Central Coast Counties - Santa Clara**

Southern Region



Date Prepared: 10/29/13



Southern Central Coast Ground Water Basins

CCGC South Counties Activities

Deliverable	Date
List of participating L&Gs and list of wells to be sampled in the fall of 2013 for members needing to complete individual monitoring activities	November 15, 2013
Submit list of wells sampled during fall 2013	January 15, 2014
Complete list of wells sampled for members for individual reporting during spring 2014	May 31, 2014
List of wells for sampling in south counties	September 1, 2014
Completion of all sampling in CCGC region	December 1, 2014
Draft final sampling report for south counties	April 15, 2015
Final sampling report for south counties	June 30, 2015

Groundwater Monitoring



Steve Deverel

HydroFocus, Inc.

Davis, CA



Groundwater Monitoring Program Objectives

- Characterize domestic supply groundwater quality
 - Spatial variability
 - Factors affecting concentrations



Planning

- Contact growers by email, letter or phone call
- Scheduled well site visits to locate well, obtain GPS coordinates, determine sampling port location and obtain construction information
- Created well information sheets for each well including pictures and maps, well location and sampling port location



Sampling in Salinas Valley

- 76 wells from October 21-25
- All sites sampled for:
 - Total dissolved solids and major ions (calcium, magnesium, sodium, potassium, chloride, sulfate, bicarbonate)
 - Nitrate
 - Stable isotopes of water
 - Nitrogen and oxygen isotopes in nitrate



Sampling in Salinas Valley

- Wells with known depth and less than approximately 250 feet
 - Collected samples for pharmaceuticals
- Domestic wells with a sampling port directly off the well head
 - Collected noble gases, tritium, and chlorofluorocarbons (CFCs) to estimate year of recharge



Salinas Valley Types of Wells Encountered

- Domestic wells
- Irrigation wells used for domestic supply











Salinas Valley

October 2013 Sampling Results for Nitrate (MCL = 45 mg/L)

	<u>Number of wells</u>
Exceed N MCL	32
80% of N MCL	2
<80 % of N MCL	42
Total	76

Next steps in Salinas Valley

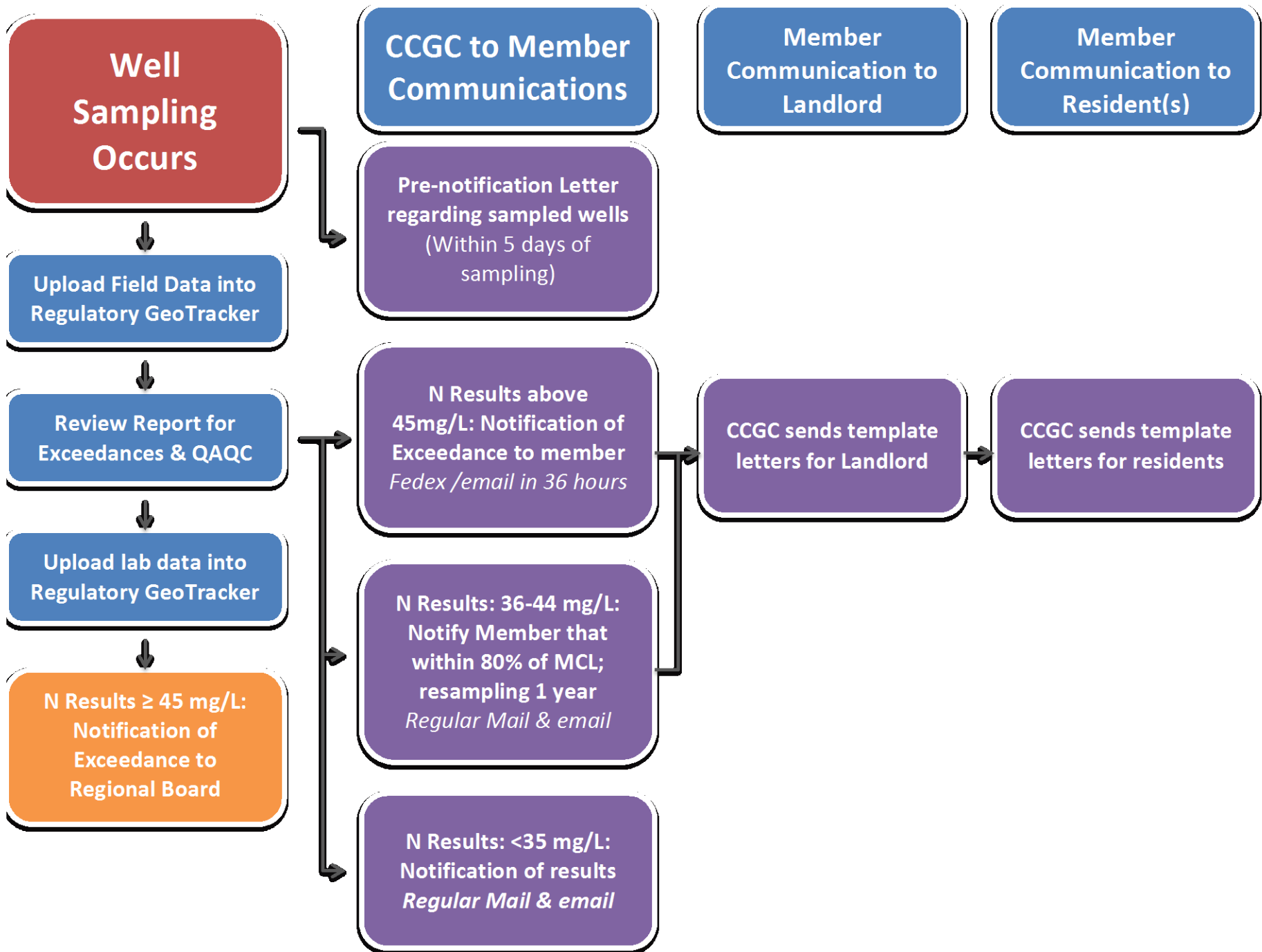
- Perform additional sampling
- Evaluate distribution in light of other data (eNOI, USGS (?), well depths, lithology)
- Ascertain need for additional sampling



This week – Sampling in southern counties

- CCGC agreed to complete individual sampling for growers
- 4 crews sampling about 180 wells
- Total of about 230 wells to sample
- Will finish by end of year/early January







Work Going Forward

- Complete new member individual monitoring requirements in groundwater plans
- Collect information from members about responses to N exceedances
- Hold member meetings late February to update on activities
- Continue fulfilling tasks outlined in plans

Questions for Us?

www.centralcoastgwc.org

Parry Klassen

Steve Deverel

Abby Taylor-Silva

