

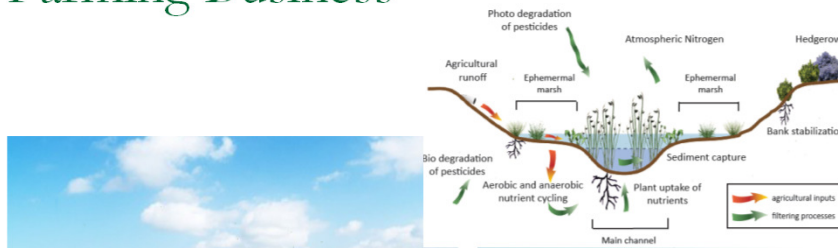
Integration of Treatment Wetlands with Agricultural Water Quality Management Plans

CCWG: To coordinate the advancement of wetland science and management
on the Central Coast.

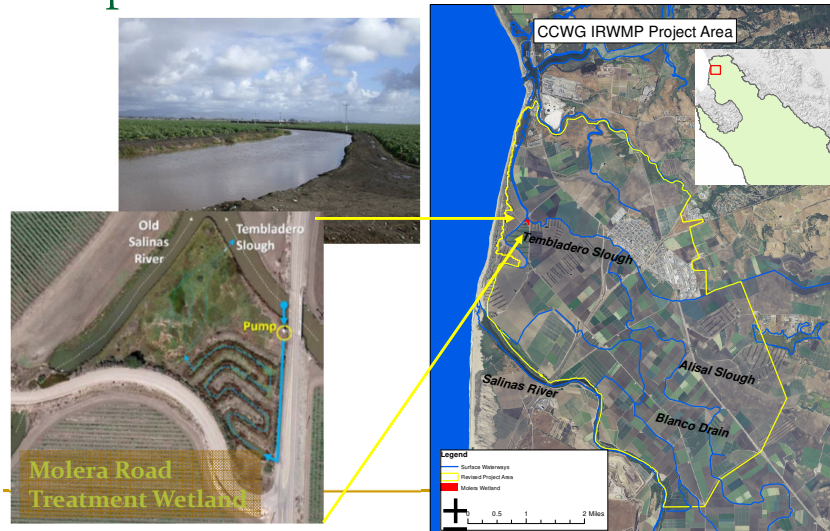
Ross Clark, Director
Central Coast Wetlands Group
Moss Landing Marine Labs



Monterey IRWMP project- Constructed Wetlands as a Portion of a Sustainable Farming Business



Integration of On-Farm Practices with Cooperative Treatment Wetlands



Results reported in Watson et al. 2007

Development of a Business Model for Cooperative Treatment Wetlands

Costs and Liabilities

- Conversion of some lands to wetlands
- Landowner agreements or easements
- Costs of construction, maintenance and monitoring
- Regulatory consequence of wetland habitat (T&E, 401)

Benefits of this Approach

- Superior Cost/Benefit (spend money to fix the problem)
- Needed reduction in overall permit compliance costs
- Effective use of opportunity sites
- Environmental Leader in the Industry
- Collaborative partnership with neighboring land owners
- Watershed approach to water quality issues

Key Issues to be addressed through IRWMP Planning Process

- Ensure that participating landowners receive sufficient regulatory credit for actions taken.
 - Define adaptive management process for projects that miss interim WQ objectives.
 - Allocate costs among partnering landowners.
 - Establish safe harbor agreements and wetland maintenance plans.
 - Address food safety concerns.
 - Integrate with County flood control programs.
-

The Future...

Only when creeks and wetlands are considered an important component of sustainable farming, will we regain the full value of our water resources.

