



North Coast Regional Water Quality Control Board

What you need to know about us

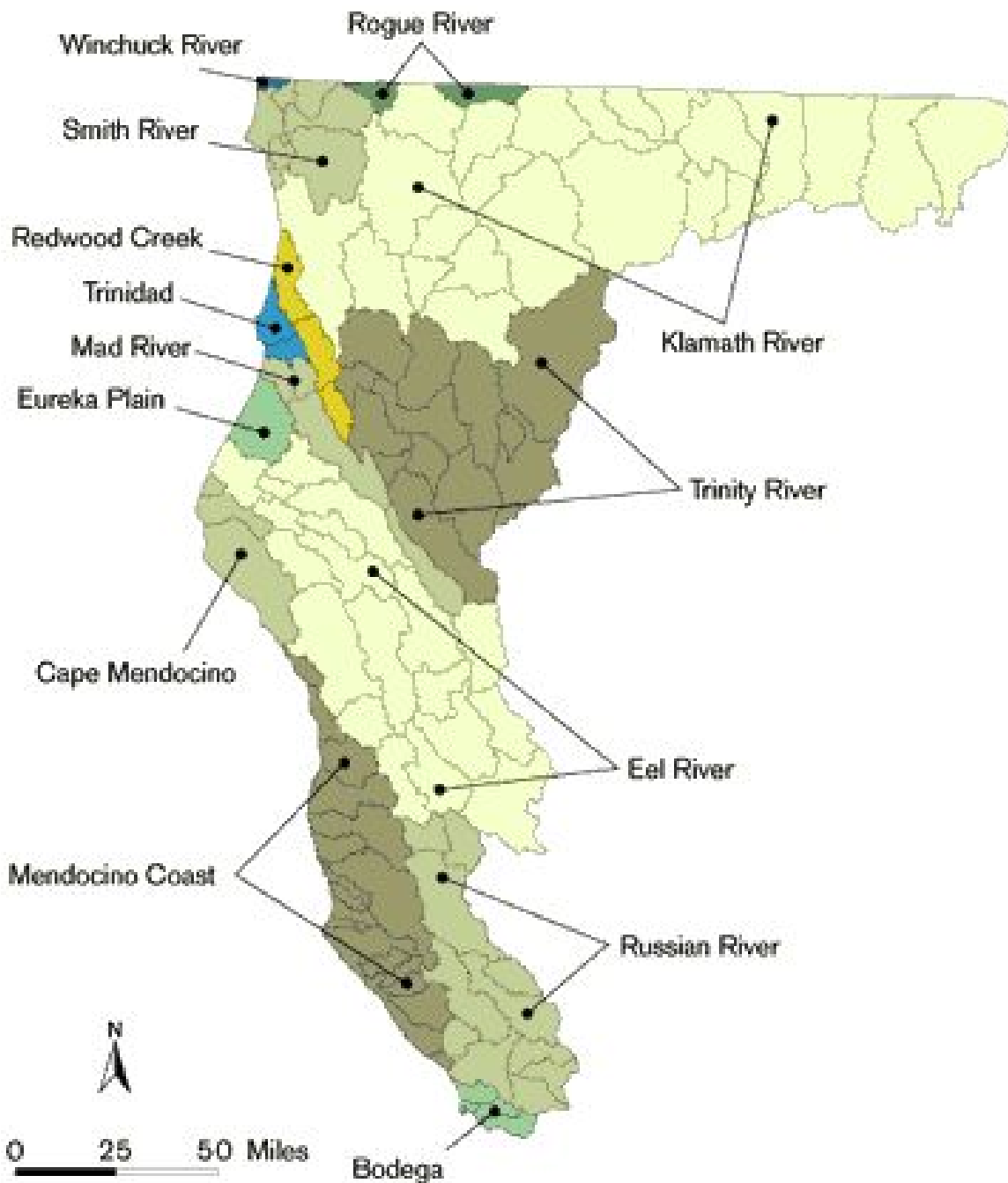
Outline

Issues/Priorities

Accomplishments

Challenges

The New Year's flood





Water Quality Issues

- Protecting high quality surface and ground water
- Restoring impaired waters
 - Salmon restoration
 - Protecting drinking water supplies for rural domestic use

Impairments

- 79% temperature
- 59% sediment
- 33% nutrients

Priorities

- TMDL adoption and implementation
- Reducing the NPDES Backlog/transition to CIWQS
- Enhance Enforcement
- WWDRs for Elk and Freshwater
- West College litigation

TMDLs

- Salmon and Scott adopted
- Shasta and Mainstem Klamath 06/07
- Elk and Freshwater 07
- Begin work on Russian River















TMDLs

- Need from the SWRCB
 - Adoption of the Scott
 - Staff review of document as we adopt
 - Continue link between AB 2121 and Russian River TMDL
 - Statewide FW bathing standards

NPDES

- Reduce the backlog
- Implement CIWQS



NPDES

- What we need from the SWRCB
 - Continued support from Tetra Tech
 - Continued investment in CIWQS
 - Maintain focus on a successful implementation of CIWQS for surface water permits

Enforcement

- MMPs
- Maintain priority setting system
- Improve consistency between programs
- Improve productivity





Enforcement

- What we need from the SWRCB
 - Develop metrics for measuring program success

WWDRS for Elk and Freshwater

- Adopt the WWDRs for PL and Green Diamond



Elk and Freshwater

- What we need from the SWRCB
 - Be ready for the appeal

West College Litigation

- What we need from the SWRCB
 - \$\$\$ for the many experts

Accomplishments

- Garcia River TMDL implementation
- Timber General Permit implementation

Garcia River

- 74% of watershed is complying with the TMDL requirements



Timber Permits

- Prevention
- Clean up of “bleeding” existing sources



Major Program Challenges

- Resources to benchmark and judge effectiveness of rules/practices
- Separation of WQ and WR in TMDLs
- Challenge of NPS implementation
 - SWRCB policy
 - TMDLs
 - Complaints/enforcement

New Year's Flood 2005/2006

- Severe event
- Many damaged systems
- Assistance from RCWA, USEPA, HIS, Counties

ANADROMOUS STREAM CROSSINGS



Soldier Ck at Evans Bar. Left: Feb 2004.

Right: in Dec 2005 at higher flows

The passage structures in all five counties performed well in passing debris and bedload.





