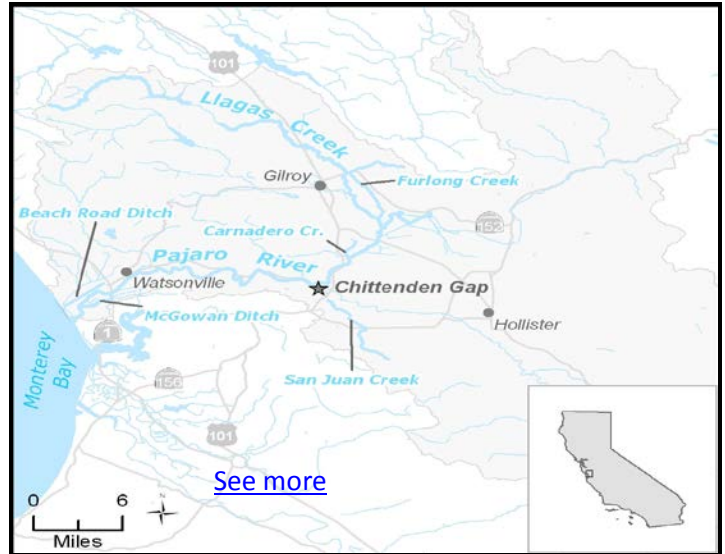


Total Maximum Daily Load Progress Report	
Regional Water Board	Central Coast, Region 3
<u>Beneficial uses affected</u>	MUN
Pollutant(s) addressed:	Nitrate
Implemented through:	Regulatory and non-regulatory Action
Approval date:	October 2006

Pajaro River and Llagas Creek TMDL for Nitrate	
<b>STATUS</b>	<input type="checkbox"/> Conditions Improving
	<input type="checkbox"/> Data Inconclusive
	<input checked="" type="checkbox"/> <b>Improvement Needed</b>
	<input type="checkbox"/> TMDL Achieved/Waterbody Delisted

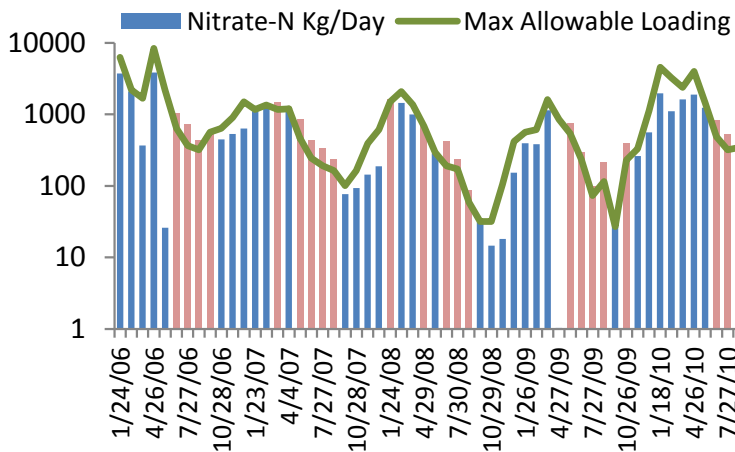
**TMDL summary:** The nitrate TMDL for the Pajaro River and one of its tributaries, Llagas Creek was approved by USEPA October 13, 2006. The TMDL for Pajaro River and Llagas Creek is set at a maximum concentration of 10 mg/l NO<sub>3</sub>-N in receiving water to protect the MUN beneficial use. The TMDL was approved by the Central Coast Water Board through a resolution, not a basin plan amendment. The Water Board found that discharges from irrigated lands was the single source causing impairment. Other sources of nitrate were identified and found not causing exceedance. Allocations of 10 mg/l nitrate-N are assigned to each source, including discharges from irrigated agriculture, stormwater, and treated wastewater. Treated wastewater discharge from the South County Regional Wastewater Authority facility (SWCRA), is assigned a waste load allocation of 5 mg/L NO<sub>3</sub>-N as a 30-day mean and 10 mg/L NO<sub>3</sub>-N for a daily maximum. The TMDL is implemented through requirements set forth in the *Conditional Waiver of Waste Discharge Requirements for Discharges from Irrigated Lands (Ag Order)*. Additionally, NPDES permits for SWCRA and stormwater assure continued compliance of wasteload allocations.

### Location of Impaired Reaches of Pajaro River and Llagas Creek



### TMDL Waste Load Allocations/Load Allocations

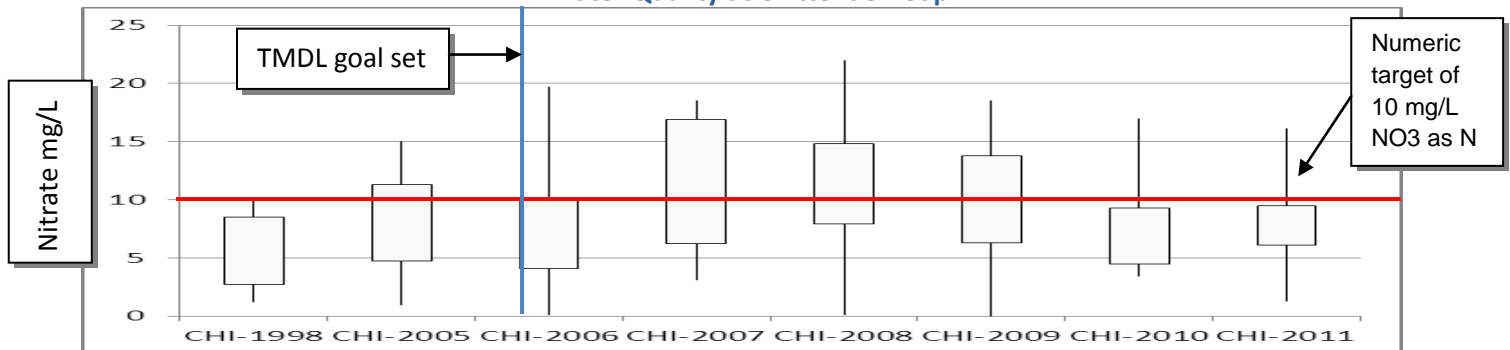
Nitrate load for Chittenden Gap (305CHI) – Kg/Day



### Water Quality Outcomes

- The TMDL is not being achieved on Pajaro River.
- The TMDL is not being achieved on Llagas Creek.
- Monitoring sites downstream of active agriculture croplands continue to show exceedences of the TMDL (see graph below).
- Multiple recently listed water bodies (2010) including Beach Road Ditch, McGowan Ditch, Carnadero Creek, San Juan Creek, and Furlong Creek, have in stream nitrate concentrations above 10 mg/L NO<sub>3</sub>-N.
- New 303(d) listings in the Pajaro River for low dissolved oxygen are likely driven by continued nitrate loading from agricultural lands.
- The Central Coast Water Board approved a revised Ag Order on March 15, 2012. There are multiple petitions and requests for stay of the Ag Order-decisions, which are pending.
- Staff is conducting outreach to inform agriculturalists of Ag Order requirements.
- Staff is recommending revision of the current TMDL and targets to address 2010 listings.

### Water Quality at Chittenden Gap



CHI= Chittenden Gap (years samples were collected and analyzed) Box and whisker plots, top of box 75 percentile, bottom of box 25 percentile